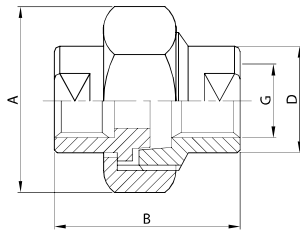




RACCORDO F. FE.
UNION T. FE.
RACCORD F. FE.
ENLACE JUNTA CONICA

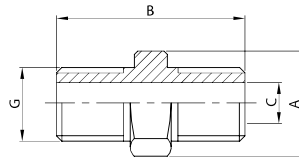
020 G



DN	A	B	D	G	gr
14	32,0	42,0	19,0	1/4"	115
38	36,0	45,0	23,0	3/8"	155
12	46,0	48,0	28,0	1/2"	275
34	50,0	52,0	34,0	3/4"	330
100	55,0	58,0	40,0	1"	400
114	70,0	65,0	50,0	1 1/4"	740
112	75,0	70,0	56,0	1 1/2"	870
200	90,0	78,0	70,0	2"	950

NIPPO F. MA.
NIPPLE T. MA.
NIPPLE F. MA.
MACHON R. M.

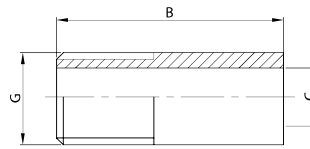
021 G



DN	A	B	C	G	gr
14	19,0	31,0	9,0	1/4"	25
38	22,0	34,0	11,0	3/8"	40
12	27,0	38,0	15,0	1/2"	60
34	32,0	42,0	20,0	3/4"	110
100	41,0	46,0	25,0	1"	170
114	50,0	52,0	32,0	1 1/4"	260
112	55,0	55,0	38,0	1 1/2"	300
200	70,0	60,0	50,0	2"	510
212	90,0	65,0	63,0	2 1/2"	850
300	96,0	72,0	75,0	3"	900

TRONCHETTO F. MA.
THREADED T. MA.
TRONCON F. MA.
ENTRONQUE R. M.

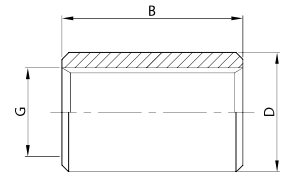
022 G



DN	B	C	G	gr
14	25,0	9,0	1/4"	12
38	30,0	12,5	3/8"	20
12	35,0	15,7	1/2"	32
34	40,0	21,0	3/4"	60
100	40,0	26,6	1"	85
114	45,0	35,0	1 1/4"	122
112	50,0	41,0	1 1/2"	165
200	60,0	52,5	2"	250
212	65,0	68,9	2 1/2"	295
300	70,0	78,0	3"	625

MANICOTTO F. FE.
SOCKET T. FE.
MANCHON F. FE.
MANGUITO R. H.

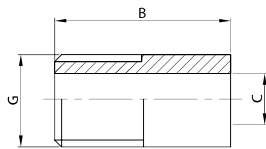
023 G



DN	B	D	G	gr
14	25,0	20,0	1/4"	35
38	27,0	22,0	3/8"	35
12	31,0	27,0	1/2"	60
34	35,0	34,0	3/4"	100
100	40,0	39,0	1"	135
114	45,0	49,0	1 1/4"	235
112	50,0	56,0	1 1/2"	280
200	55,0	70,0	2"	700
212	60,0	87,0	2 1/2"	950
300	65,0	99,0	3"	985

TRONCHETTO F. MA.
THREADED T. MA.
TRONCON F. MA.
ENTRONQUE R. M.

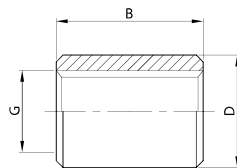
022 GL



DN	B	C	G	gr
14	18,0	9,0	1/4"	10
38	20,0	12,5	3/8"	20
12	25,0	15,7	1/2"	40
34	30,0	21,0	3/4"	60
100	35,0	26,6	1"	100
114	40,0	35,0	1 1/4"	140
112	40,0	41,0	1 1/2"	160
200	45,0	52,5	2"	200

MANICOTTO F. FE.
SOCKET T. FE.
MANCHON F. FE.
MANGUITO R. H.

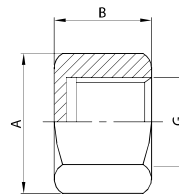
023 GL



DN	B	D	G	gr
14	18,0	20,0	1/4"	30
38	20,0	22,0	3/8"	40
12	25,0	27,0	1/2"	60
34	30,0	34,0	3/4"	100
100	35,0	39,0	1"	140
114	40,0	49,0	1 1/4"	230
112	40,0	56,0	1 1/2"	260
200	45,0	70,0	2"	300

TAPPO F. FE.
BLANK T. FE.
BOUCHON F. FE.
TAPÓN R. H.

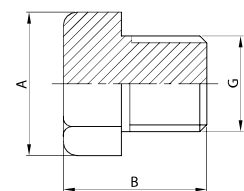
024 G



DN	A	B	G	gr
14	19,0	14,0	1/4"	20
38	22,0	16,0	3/8"	40
12	27,0	17,0	1/2"	50
34	32,0	20,0	3/4"	80
100	41,0	22,0	1"	140
114	50,0	24,0	1 1/4"	190
112	55,0	27,0	1 1/2"	260
200	70,0	30,0	2"	420

TAPPO F. MA.
BLANK T. MA.
BOUCHON F. MA.
TAPÓN R. M.

025 G



DN	A	B	G	gr
14	19,0	19,0	1/4"	30
38	22,0	21,0	3/8"	40
12	27,0	24,0	1/2"	80
34	32,0	27,0	3/4"	140
100	41,0	29,0	1"	240
114	50,0	33,0	1 1/4"	420
112	55,0	35,0	1 1/2"	580
200	70,0	38,0	2"	980